

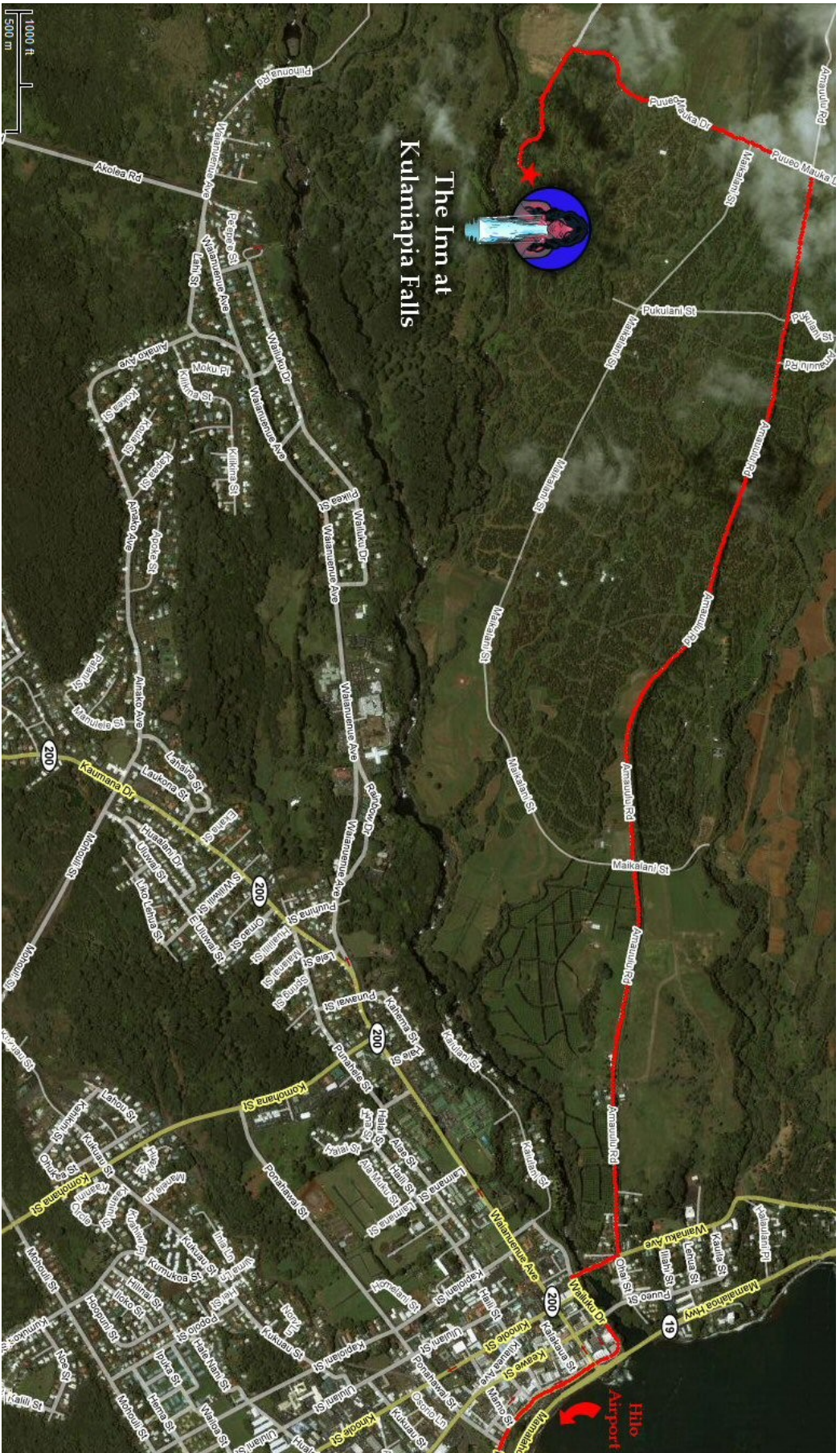
Driving directions to The Inn at Kulaniapia Falls:

One Kulaniapia Drive, Hilo, HI 96720
(see map on second page for additional details.)

From the Hilo Airport - Turn right at the first traffic light after leaving the airport (Highway 11). Turn left at the next traffic light (Kamehameha Ave.). Continue through downtown to the last traffic light (Waianuenue) and turn left. Go one block and turn right (Keawe St.). Go over the bridge and turn left (Ohai St.). Continue one block to stop sign. (From this point it is four miles to the Inn, all of which is paved. After the stop sign, continue one mile to Maikalani and turn left. Continue one mile to Kulaniapia sign. (At this point the road goes up through the middle of 2000 acres of Macadamia Nut trees.) Follow the signage to the Inn. There are no street lights from the stop sign to the Inn (4 miles), so if at all possible, it would be best to arrive during daylight hours on your first visit.

From Kona via the Hamakua (Highway 19) - Exit into Hilo at the sign. You will be on Waianuenue Ave. Go one block to Keawe and turn right. Follow the directions as above to the Inn. Printing out a map from our website will help you find your way.

The Inn at Kulaniapia Falls - Luxury Bed & Breakfast Resort
One Kulaniapia Drive - Hilo Hawaii 96720 - P.O. Box 646, Hilo Hawaii, 96721
Call Toll Free: 1-866-935-6789 - or Email: lenny@waterfall.net



The Inn at
Kulaniapia Falls

Hilo
Airport